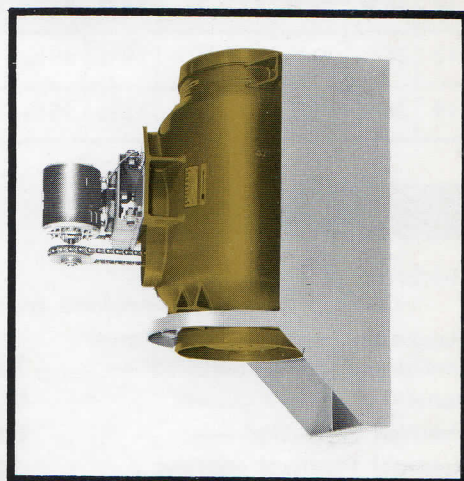
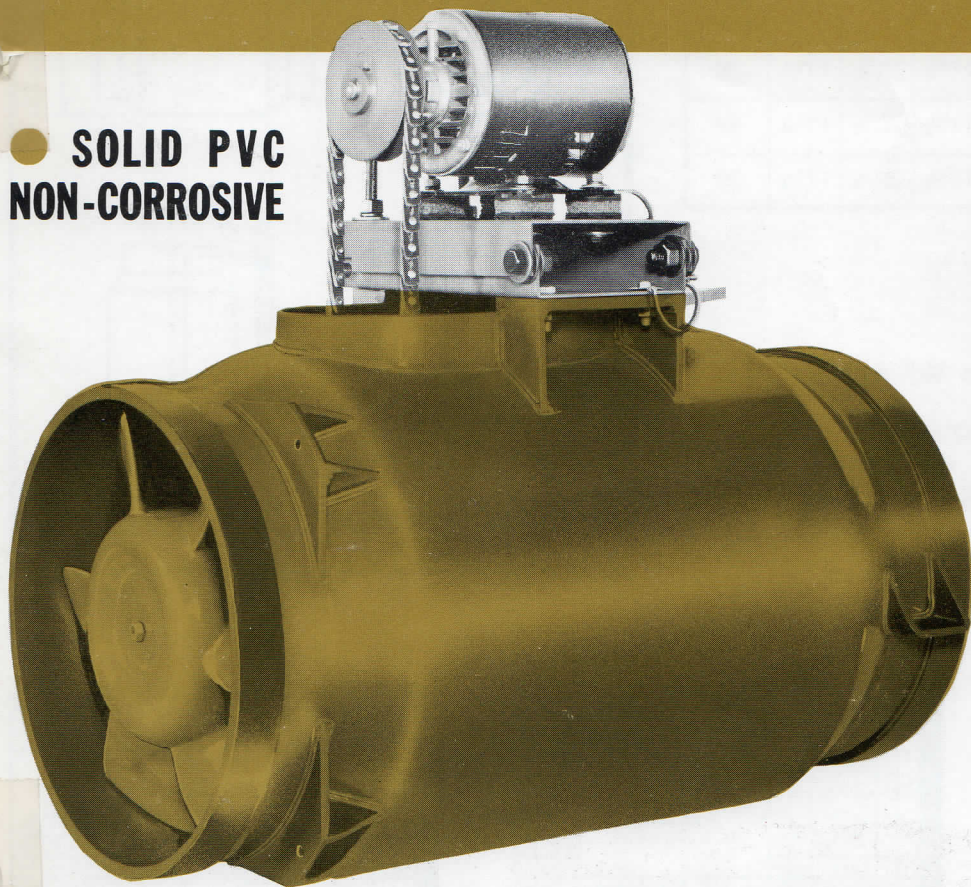


SHELDONS

BULLETIN 666

● **SOLID PVC
NON-CORROSIVE**



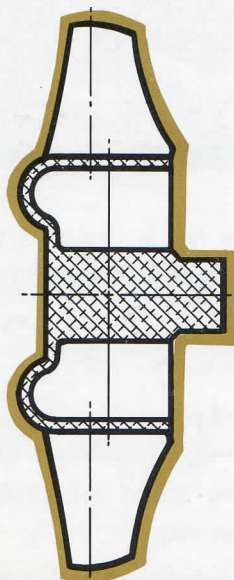
● **TWO-STAGE
PERFORMANCE**
● **THREE SIZES
10" - 12" - 14"**

PVC

BIFURCATOR

FOR FUME EXHAUST SYSTEMS

FEATURES



Entirely non-corrosive rigid PVC construction.

All PVC parts hot-air welded.

Cast aluminum wheel, with heavy coating of plasticised PVC obtained by dipping.

Accurate wheel balance obtained before assembly.

Linear Polyethelene shaft seal for minimum fume leakage.

2-stage Bifurcator to give higher static pressures at low speeds for noise reduction.

Split V-belt for ease of replacement. Standard belt supplied on original installation for extremely long belt life.

Extended grease nipples for ease of lubrication.

Stream-lined bearing housing reduces turbulence.

Internal guide vanes minimize shock and turbulence at blades - further reduces noise.

Slip collar connection at inlet and outlet.

Low noise levels - figures available on request.

Special M.S. mounting frame available for supporting Bifurcator vertically. Provides a practical mounting for fume hood installations.

Mounting supports rubber isolated.

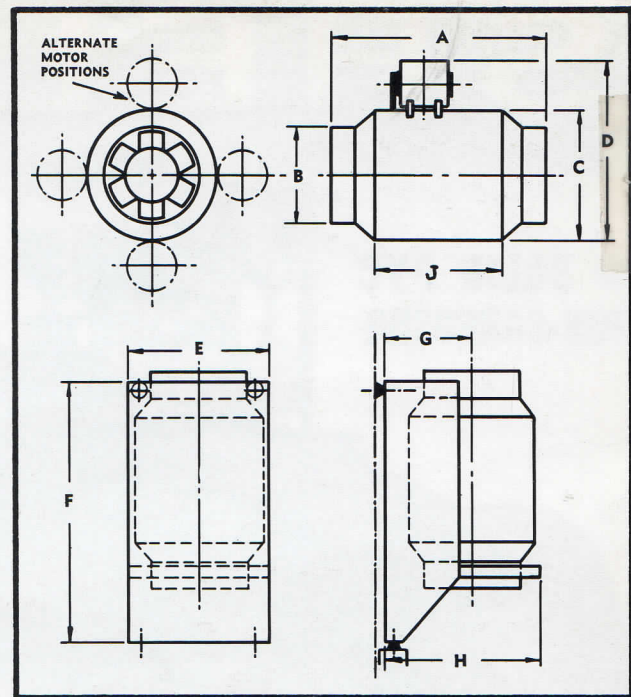
Extra heavy duty bearings for long life and trouble-free service.

Oversize shaft for maximum running speeds well below first critical speed.

**CAST ALUMINUM WHEEL
PLASTISOL COATED**

Dimensions

Size	A	B	C	D	E	F	G	H	J	Wt.-lb. incl. motor
10	28 $\frac{3}{4}$	11 $\frac{1}{4}$	17	31	18 $\frac{3}{4}$	35 $\frac{1}{2}$	11 $\frac{5}{8}$	20 $\frac{7}{8}$	17 $\frac{1}{4}$	80
12	28 $\frac{3}{4}$	13 $\frac{1}{8}$	17	35 $\frac{1}{2}$	18 $\frac{3}{4}$	35 $\frac{1}{2}$	11 $\frac{5}{8}$	20 $\frac{7}{8}$	17 $\frac{1}{4}$	84
14	28 $\frac{3}{4}$	15 $\frac{1}{8}$	17	35 $\frac{7}{8}$	18 $\frac{3}{4}$	35 $\frac{1}{2}$	11 $\frac{5}{8}$	20 $\frac{7}{8}$	17 $\frac{1}{4}$	90



Specifications

Thickness of PVC casing —
Housing moulded from $\frac{1}{4}$ " rigid PVC sheet.

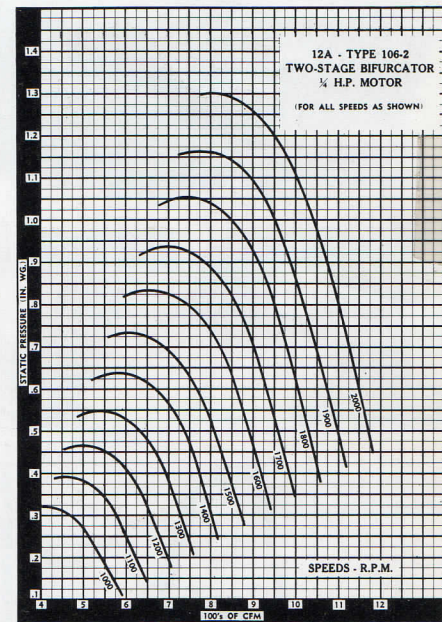
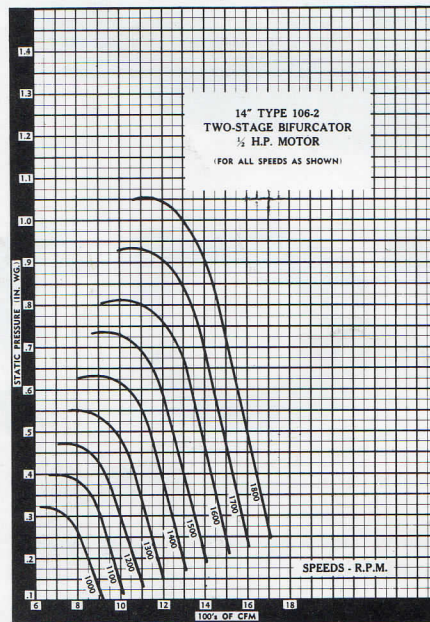
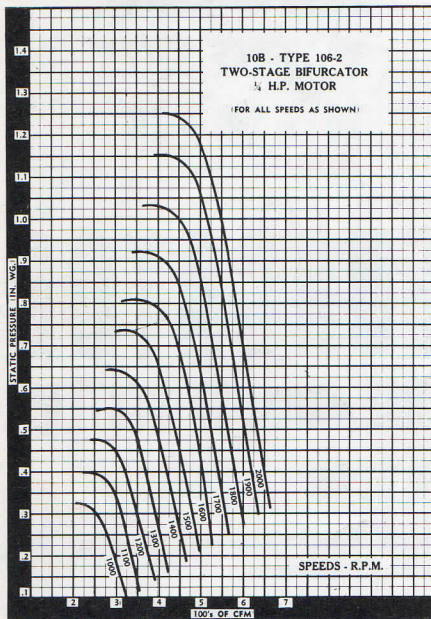
Maximum recommended temperature of gases handled — 100°F.

Density of rigid PVC — 86 #/cu. ft.

Thermal expansion — 6.5×10^{-5} inches per °C.

Nominal Plastisol coating thickness on wheel — $\frac{1}{8}$ "

PERFORMANCE



Applications

Sheldons solid PVC Bifurcators were designed to meet the need for an absolutely non-corrosive fan to handle the exhaust fumes from chemical laboratory fume cabinets.

With its axial flow arrangement, the Bifurcator lends itself to installation in duct-work with the minimum

of elbows and bends. The fan is designed to operate vertically or horizontally to suit any installation layout.

Sound Levels

Measurements of the sound power level in each octave band have been made under laboratory conditions. Sound power levels at any speed for all 3 sizes of Bifurcators are available on request.



SHELDONS ENGINEERING LIMITED

Galt, Ontario, Montreal, Toronto, Hamilton, London, Ottawa, Vancouver

Representatives in principal cities across Canada

Sheldons Manufacturing Corporation, Bensenville, Illinois